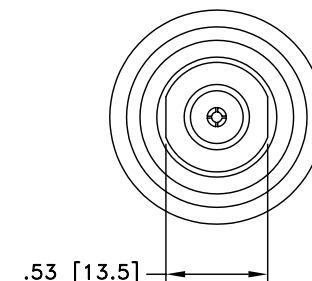
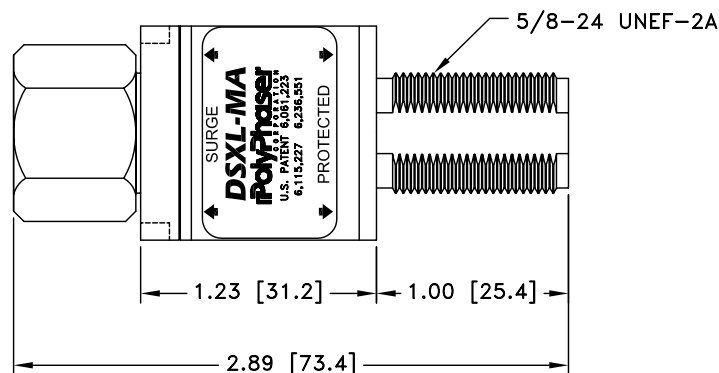
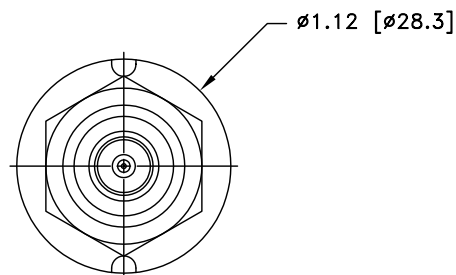


ALL DESIGN, OPERATIVE AND PROCESS DATA PERTAINING TO THE ARTICLE SHOWN ON THIS SHEET IS THE PROPERTY OF POLYPHASE CORPORATION. THE INFORMATION IS NOT TO BE COPIED, REPRODUCED, REVEALED TO OR APPROPRIATED BY OTHERS WITHOUT THE EXPRESS WRITTEN CONSENT OF POLYPHASE CORPORATION.

# REVISIONS

REV LTR	DATE	ENG	MKTG	Q.A.
A	05/07/04 <small>RS</small>	JJ	SD	JB



## MAXIMUM CHARACTERISTICS

### APPLICATION:

BULKHEAD MOUNT  
WEATHERPROOF WHEN INSTALLED

### SURGE:

18kA IEC 61000-4-5 8/20μs WAVEFORM

### FREQUENCY RANGE:

800MHz TO 2.3GHz  
(700MHz TO 2.7 GHz @ 1.2:1 VSWR)

### VSWR:

≤1.1:1 TYPICAL

### INSERTION LOSS:

≤0.1dB

### CONTINUOUS POWER:

500W@920MHz

(750W @ 50°C)

### LET THROUGH VOLTAGE:

≤±3 VOLTS FOR 3kA @ 8/20μs WAVEFORM

### THROUGHPUT ENERGY:

≤0.5μJ FOR 3kA @ 8/20μs WAVEFORM

### TEMPERATURE:

-40°C TO +85°C STORAGE/OPERATING

### VIBRATION:

1G AT 5Hz TO 100Hz

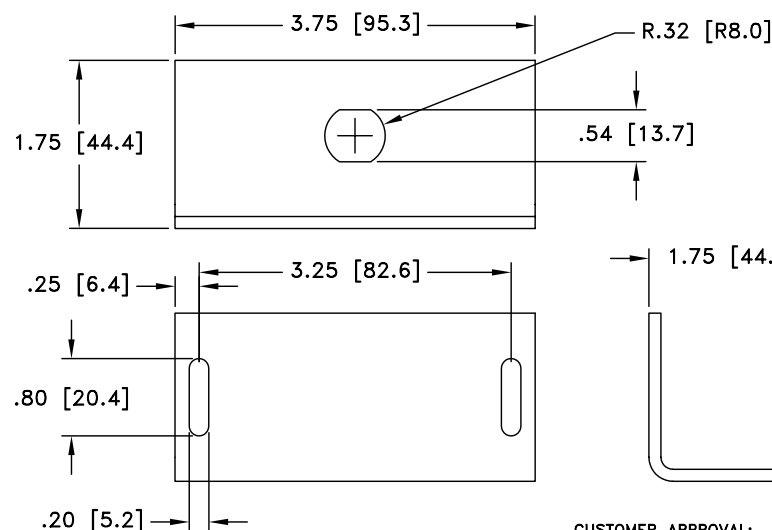
### ENVIRONMENTAL:

MEETS IEC 60529 IP65

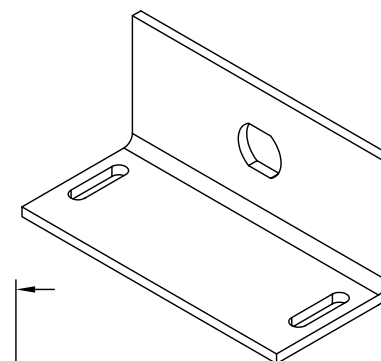
MEETS BELLCORE #TA-NWT-000487

PROCEDURE 4.11, WIND DRIVEN (120MPH)

RAIN INTRUSION TEST.




BRACKET SCALE 1/2



CUSTOMER APPROVAL: \_\_\_\_\_ DATE: \_\_\_\_\_

ALL DIMENSIONS SHOWN ABOVE ARE FOR REFERENCE ONLY.

DRAFTER I. BENNETT	DATE 10/24/02	 P.O. BOX 9000 MINDEN, NV 89423 TEL: 775-782-2511 FAX: 775-782-4476 DWG NO/PART NO/DESCRIPTION DSXL-MA-BF CUSTOMER PRINT		
MECH ENGINEER R. DUNNING	DATE 10/29/02			
ELEC ENGINEER J. JONES	DATE 10/29/02			
MARKETING S. DOTTER	DATE 10/31/02			
QUALITY DEPT L. JACQUES	DATE 10/30/02	CAGE CODE 61114	FILE NAME -C1	SHEET 1 OF 1